

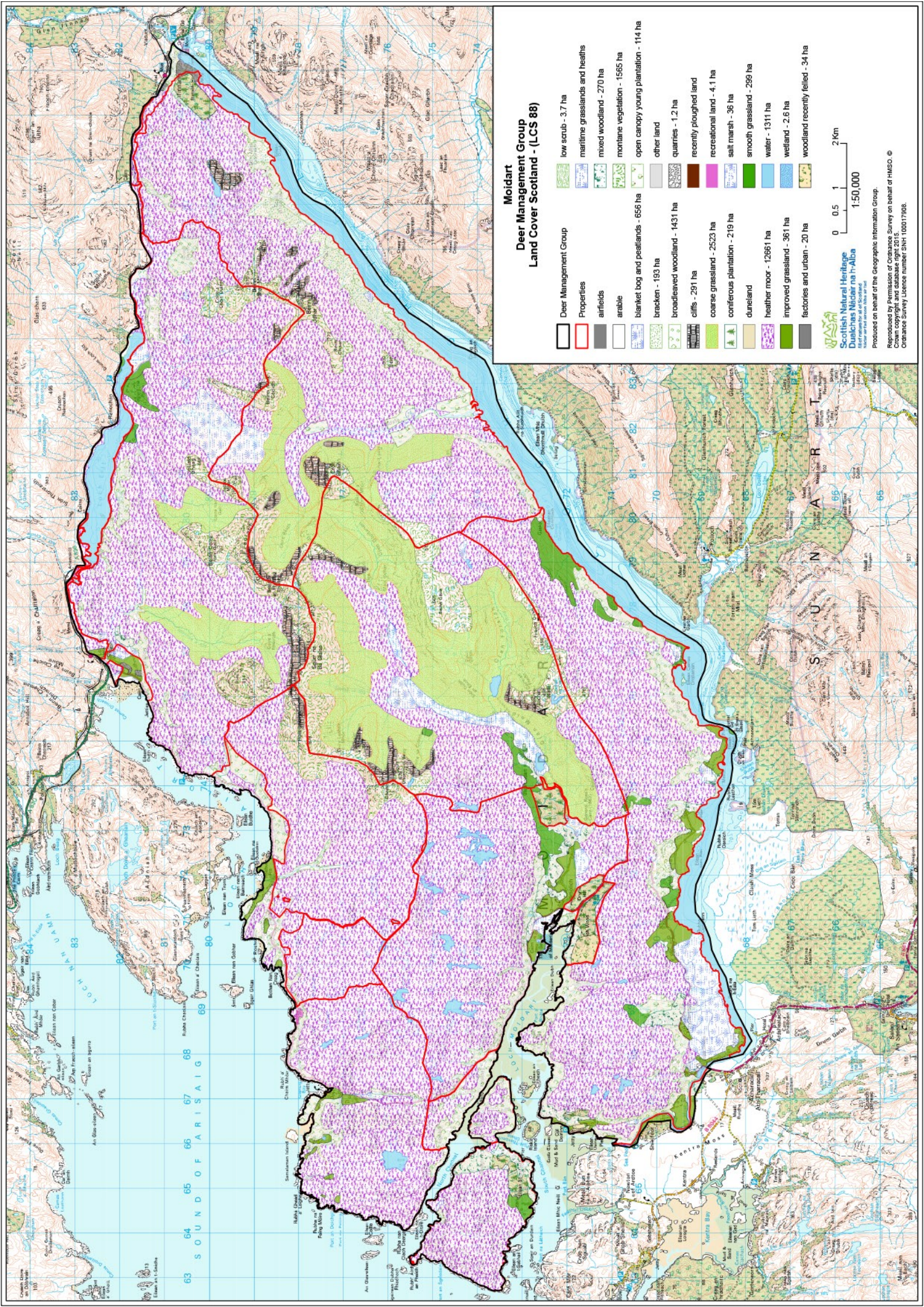


6. RESOURCES & AUDIT

6.1 The area of the deer management unit – effectively the Moidart peninsula - is approximately 20,300 ha (or 203 km<sup>2</sup>), including open hill, woodland etc, and including areas of land from which deer are excluded eg. forestry, native woodland, deer-fenced grazing parks, residential areas and gardens. This Table shows some of the quantities of certain habitats:

Landholding	Area in ha	Farmland ha	Woodland: fenced ha	Woodland: unfenced ha	Designated ha SSSI
Inverailort	3668			809	2.5 SSSI
Glenaladale	3888		158	512	36 SSSI
Glenmoidart	3351		38		
Lochshiel	3495	150		15	374 SSSI
Kinlochmoidart	1980	49	42	182	813 SSSI
Roshven Hill	1324	200	150	7	
West Roshven	337				
Glenuig	1372	8	500	50	50 SSSI
Eilean Shona	543				
Shona Beag	99				99 SSSI
Kyleswood	142				
Ardmolich	92		61	31	
<b>Total</b>	<b>20 291</b>	<b>407</b>	<b>888</b>	<b>1575</b>	<b>1 374.5 SSSI</b>

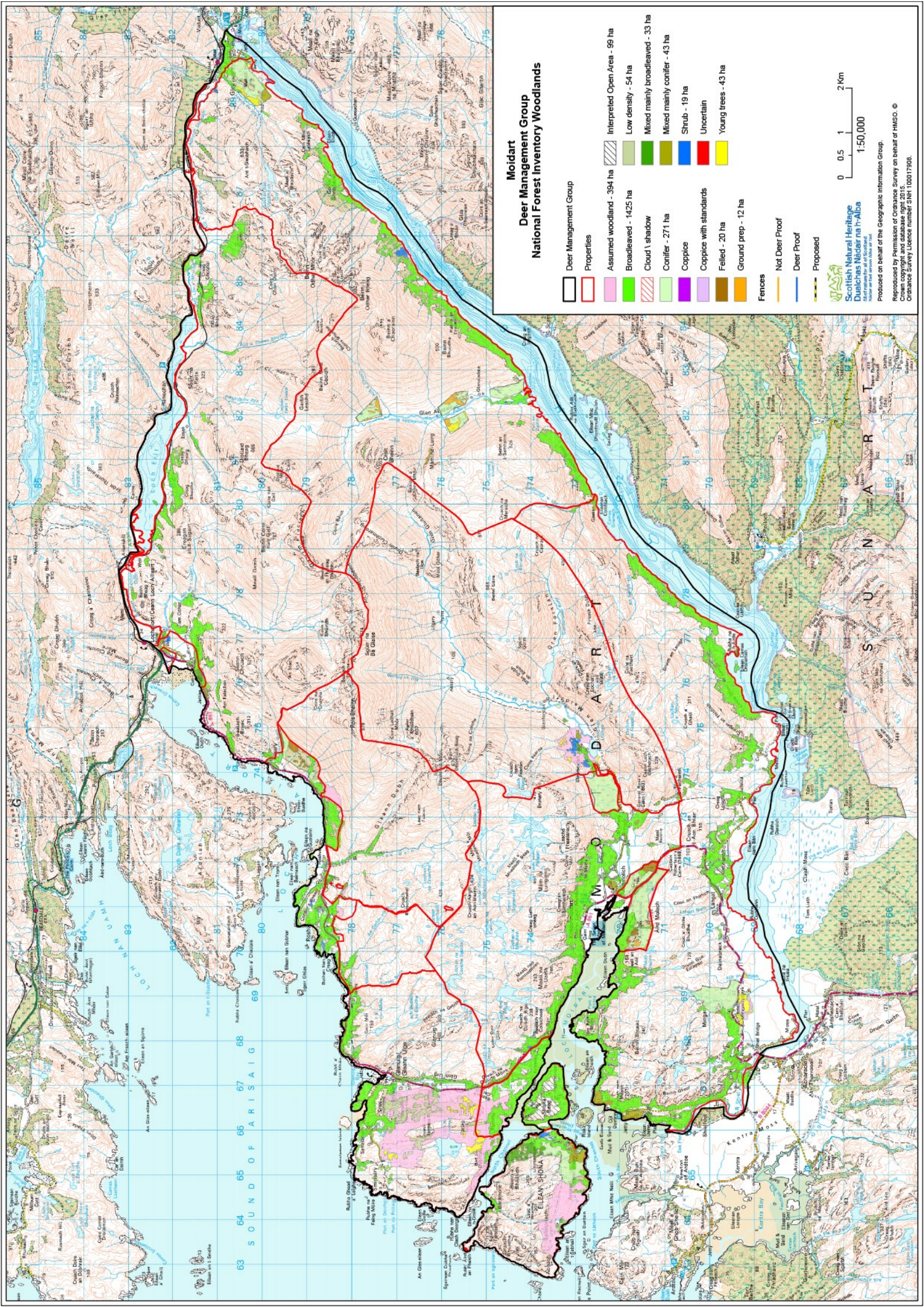
6.2 Apart from the management of Red Deer, other management and business regimes are maintained on Moidart landholdings, for example, forestry, farming, farm tenancies (eg. Dalilea), crofting (eg. townships of Dalnabreac, Mingarry, Moss, Glenuig and Smirisary with common grazings), livestock production and deer farming. Farm livestock includes sheep and cattle on low- ground grazings and summer pasturing on hill land at Dalilea, Cliff, Kinlochmoidart and Roshven, although numbers of stock have been reduced from their historical levels. A reduction in sheep numbers, for example, has followed changing countryside patterns of hill farming in Scotland and a sub-recent decline in the importance of agriculture within the rural economy of the Highlands. This trend of decline in sheep numbers raises the profile of deer management in the Highlands and also raises its significance for the development of national land use strategies. It is now generally a key part of a mix of activities (including, for example, fishing and provision of hospitality and accommodation) rather than the sole economic activity, but it serves vitally to maintain local employment and contribute to the local economy.



**Moidart  
Deer Management Group  
Land Cover Scotland - (LCS 88)**

- |                                    |                                       |
|------------------------------------|---------------------------------------|
| Deer Management Group              | low scrub - 3.7 ha                    |
| Properties                         | maritime grasslands and heaths        |
| airfields                          | mixed woodland - 270 ha               |
| arable                             | montane vegetation - 1565 ha          |
| blanket bog and peatlands - 656 ha | open canopy young plantation - 114 ha |
| bracken - 193 ha                   | other land                            |
| broadleaved woodland - 1431 ha     | quarries - 1.2 ha                     |
| cliffs - 291 ha                    | recently ploughed land                |
| coarse grassland - 2523 ha         | recreational land - 4.1 ha            |
| coniferous plantation - 219 ha     | salt marsh - 36 ha                    |
| dune/land                          | smooth grassland - 299 ha             |
| heather moor - 12861 ha            | water - 1311 ha                       |
| improved grassland - 361 ha        | wetland - 2.6 ha                      |
| factories and urban - 20 ha        | woodland recently felled - 34 ha      |

0 0.5 1 2 Km  
1:50,000  
Scottish Natural Heritage  
Dualchas Nàdair na h-Alba  
Produced on behalf of the Geographic Information Group.  
Reproduced by Permission of Ordnance Survey on behalf of HMSO. ©  
Ordnance Survey Licence number: SNH 100017968.



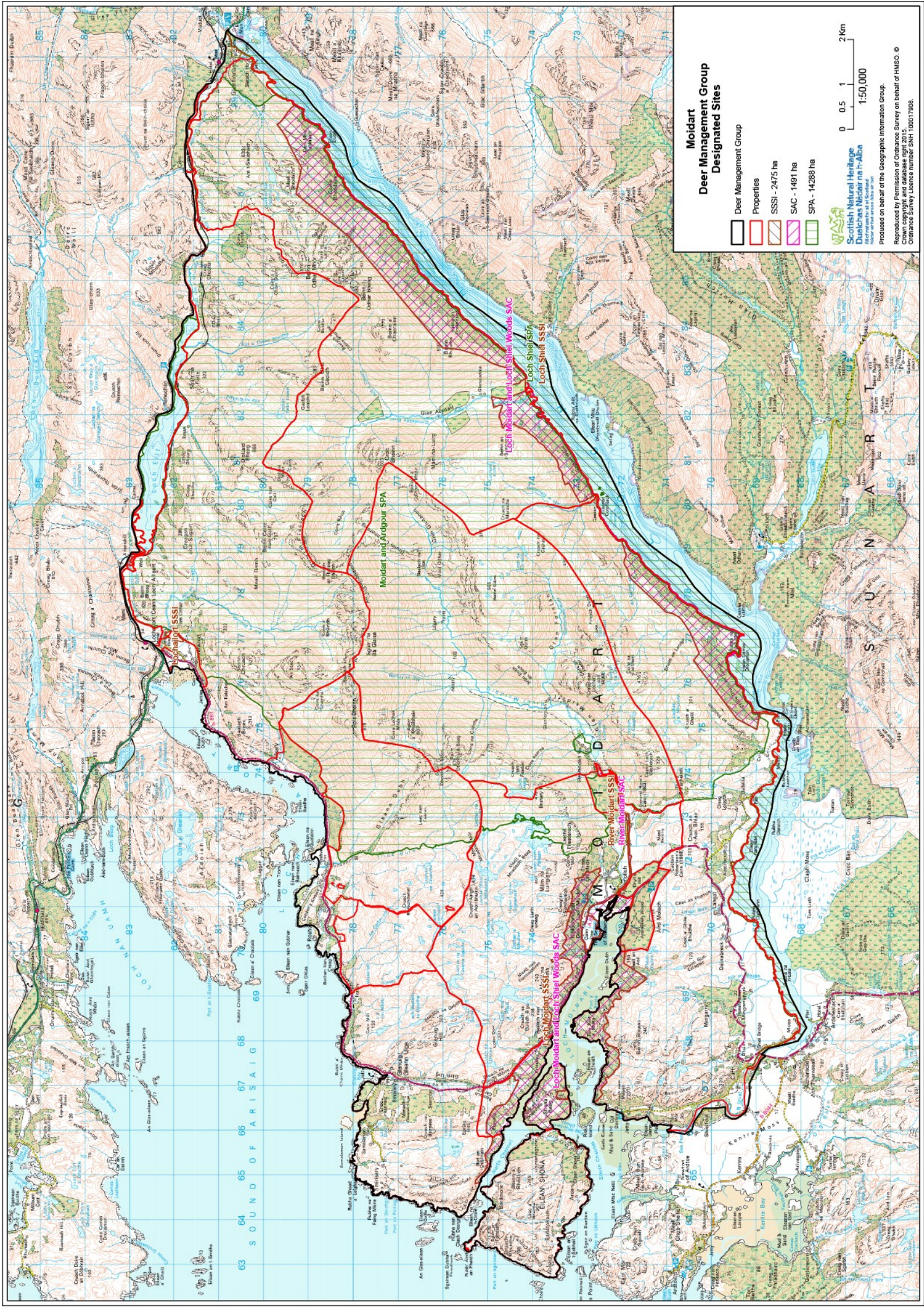
### Moidart Deer Management Group National Forest Inventory Woodlands

- |                       |                           |                                  |
|-----------------------|---------------------------|----------------------------------|
| Deer Management Group | Assumed woodland - 394 ha | Interpreted Open Area - 99 ha    |
| Properties            | Broadleaved - 1425 ha     | Low density - 54 ha              |
| Cloud 1 shadow        | Conifer - 271 ha          | Mixed mainly broadleaved - 33 ha |
| Coppice               | Coppice with standards    | Mixed mainly conifer - 43 ha     |
| Felled - 20 ha        | Ground prep - 12 ha       | Shrub - 19 ha                    |
| Not Deer Proof        | Deer Proof                | Uncertain                        |
| Proposed              | Young trees - 43 ha       | Fences                           |

0 0.5 1 2 Km  
1:50,000

Produced on behalf of the Geographic Information Group.  
Reproduced by permission of Ordnance Survey on behalf of HMSO. ©  
Crown copyright and database right 2015.  
Ordnance Survey Licence number SNH 100017906.

Scottish Natural Heritage  
Dualchas Nàdar na h-Alba  
Map of natural forest in Scotland  
Map of natural forest in Scotland



### Moidart Deer Management Group Designated Sites

-  Deer Management Group
-  Properties
-  SSSI - 2475 ha
-  SAC - 1491 ha
-  SPA - 14288 ha

 Scottish Natural Heritage  
 Scottish Natural Heritage  
 15000  
 0 0.5 1 2 Km

Produced by permission of Ordnance Survey on behalf of HMSO. ©  
 Crown copyright and database right 2015.  
 Ordnance Survey number SH1100017908.