

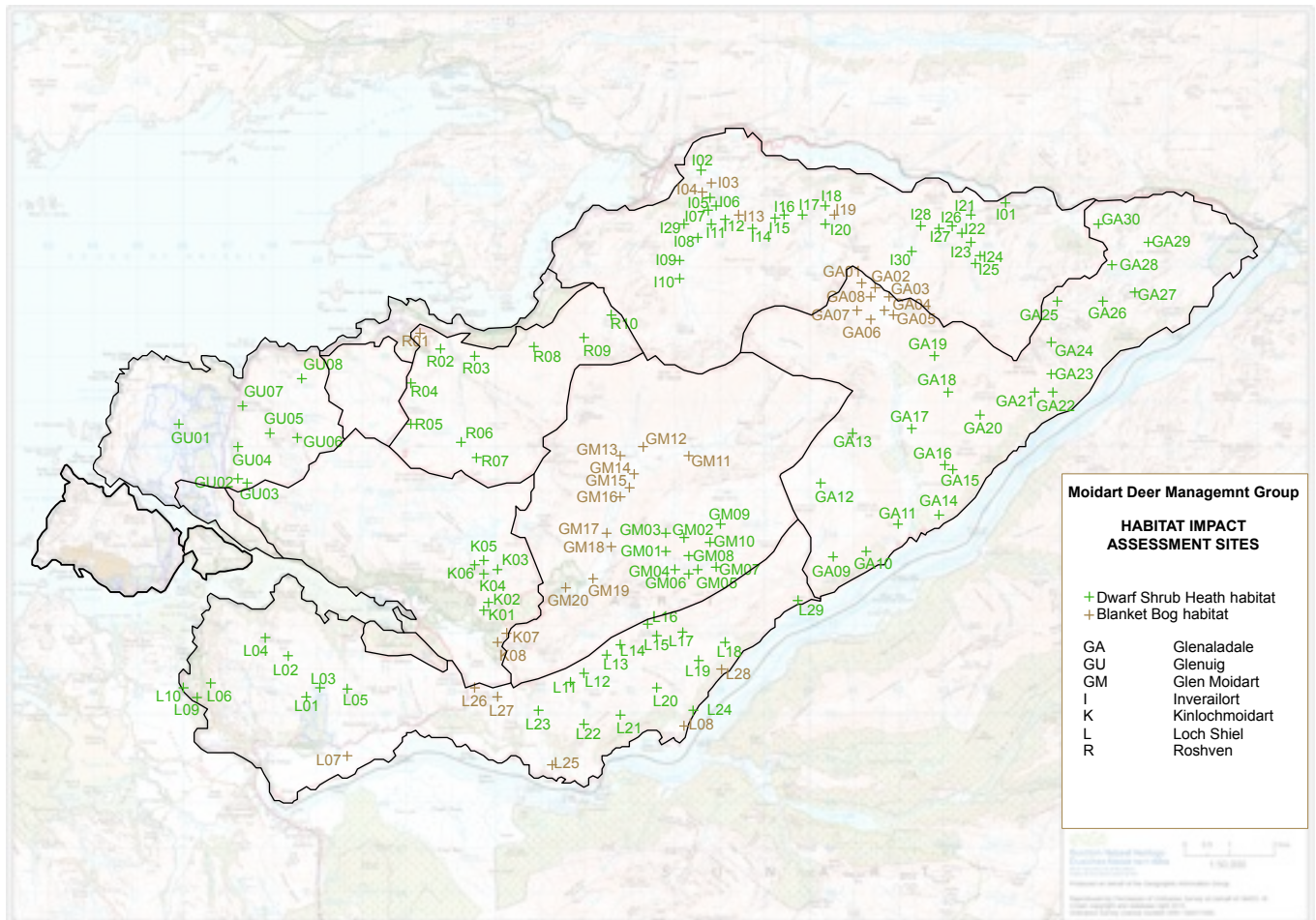


8. HABITAT IMPACT ASSESSMENT (HIA) SURVEY

8.1 A 'workshop' was held at Slatach, Glenaladale on 12/06/2013 by SNH Wildlife Management Officer for South Highland (Lochaber and Speyside), Graeme Taylor, to inform landholders and managers on Environmental Monitoring and Best Practice Methodology. The assessment procedures were carried out between May and September 2015 in line with recommendations. The two habitats to be measured in Moidart are Dwarf Shrub Heath (measure between March and August) and Blanket Bog (measure between May and September).

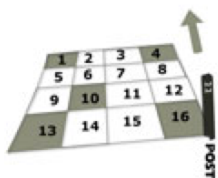


8.2 Coordinates of HIA sites were provided by SNH and the following were plotted and assessed:





8.3 Dwarf Shrub Heath [DSH] HIA



Each plot is marked with a post to set out a 2m x 2m quadrat. This is subdivided into 16 quadrats and Best Practice Guidance recommends sampling in quadrats 1, 4, 10, 13 and 16 as shown (<http://www.bestpracticeguides.org.uk/impacts/principles-practice>)

Browsing Key:

- LIGHT: less than 33% of long shoots in the sample browsed
- MODERATE: 33 – 66% long shoots browsed
- HEAVY: greater than 66% long shoots browsed

8.4 Glenaladale DSH HIA

Plot	Q1	Q4	Q10	Q13	Q16	Vegetation height / mm	Blaeberry / Heather present	Dung present
GA09						300	1 / 5	0 / 5
GA10						190	1 / 5	0 / 5
GA11						200	4 / 5	1 / 5
GA12						50	3 / 5	0 / 5
GA13						130	5 / 5	0 / 5
GA14						350	4 / 5	1 / 5
GA15						300	1 / 5	0 / 5
GA16						300	2 / 5	0 / 5
GA17						120	5 / 5	0 / 5
GA18						150	0 / 5	0 / 5
GA19						110	0 / 5	0 / 5
GA20						130	0 / 5	0 / 5
GA21						250	0 / 5	0 / 5
GA22						190	3 / 5	0 / 5
GA23						200	0 / 5	0 / 5
GA24						40	0 / 5	0 / 5
GA25						90	0 / 5	0 / 5



GA26						60	1 / 5	0 / 5
GA27						70	3 / 5	0 / 5
GA28						210	2 / 5	0 / 5
GA29						250	3 / 5	0 / 5
GA30						320	4 / 5	1 / 5

Glenaladale dwarf shrub heath HIA site photos examples



8.5 Glen Moidart DSH HIA

Plot	Q1	Q4	Q10	Q13	Q16	Vegetation height / mm	Blaeberry / Heather present	Dung present
GM01						40	5 / 5	1 / 5
GM02						70	5 / 5	1 / 5
GM03						40	5 / 5	0 / 5
GM04						130	5 / 5	0 / 5
GM05						30	5 / 5	0 / 5
GM06						60	4 / 5	0 / 5
GM07						110	5 / 5	1 / 5
GM08						60	5 / 5	0 / 5
GM09						50	3 / 5	0 / 5
GM10						20	1 / 5	1 / 5

Heavy browsing identified as cattle rather than deer from hoof marks and dung present.



8.6 Glenuig DSH HIA

Plot	Q1	Q4	Q10	Q13	Q16	Vegetation height / mm	Blaeberry / Heather present	Dung present
GU01						350	5 / 5	0 / 5
GU02						180	5 / 5	0 / 5
GU03						380	5 / 5	0 / 5
GU04						200	5 / 5	0 / 5
GU05						120	4 / 5	1 / 5
GU06						120	3 / 5	0 / 5
GU07						270	5 / 5	0 / 5
GU08						220	3 / 5	0 / 5

8.7 Kinlochmoidart DSH HIA

Plot	Q1	Q4	Q10	Q13	Q16	Vegetation height / mm	Blaeberry / Heather present	Dung present
K01						60	5 / 5	1 / 5
K02						40	5 / 5	1 / 5
K03						380	5 / 5	0 / 5
K04						120	5 / 5	0 / 5
K05						100	5 / 5	0 / 5
K06						190	5 / 5	0 / 5

Heavy browsing identified as cattle rather than deer from hoof marks and dung present



8.8 Inverailort DSH HIA

Plot	Q1	Q4	Q10	Q13	Q16	Vegetation height / mm	Blaeberry / Heather present	Dung present
I01						200	2 / 5	0 / 5
I02						150	0 / 5	0 / 5
I05						200	0 / 5	0 / 5
I06						100	4 / 5	0 / 5
I07						200	0 / 5	0 / 5
I08						200	2 / 5	0 / 5
I10						200	2 / 5	0 / 5
I11						130	2 / 5	0 / 5
I12						200	2 / 5	0 / 5
I14						200	2 / 5	0 / 5
I15						180	1 / 5	0 / 5
I16						310	0 / 5	0 / 5
I17						150	4 / 5	0 / 5
I18						160	4 / 5	0 / 5
I20						160	5 / 5	0 / 5
I21						220	3 / 5	0 / 5
I22						190	4 / 5	0 / 5
I23						180	3 / 5	0 / 5
I24						200	3 / 5	0 / 5
I25						150	0 / 5	0 / 5
I26						180	1 / 5	0 / 5
I27						200	2 / 5	0 / 5
I28						210	1 / 5	0 / 5
I29						200	3 / 5	0 / 5
I30						180	4 / 5	0 / 5