

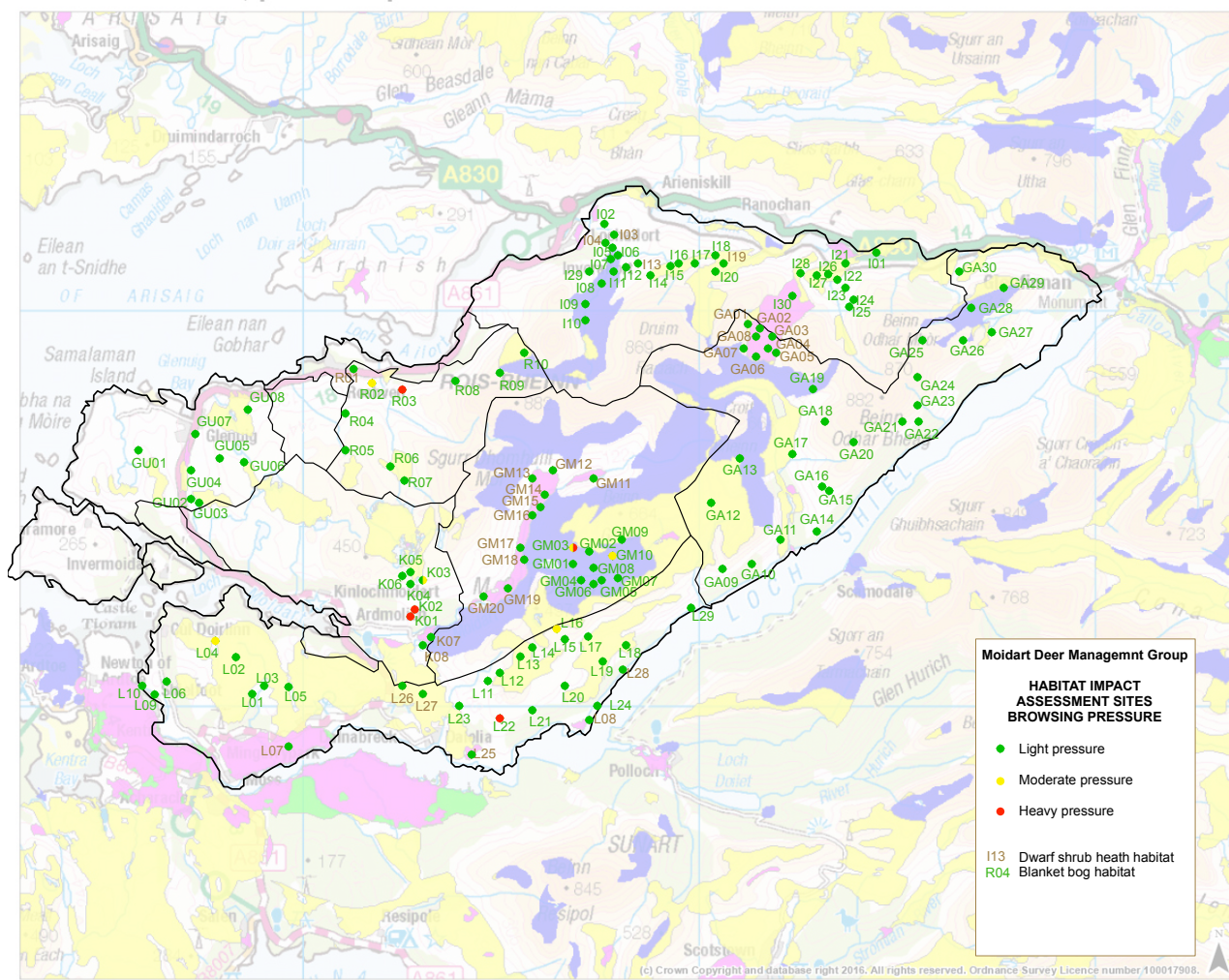




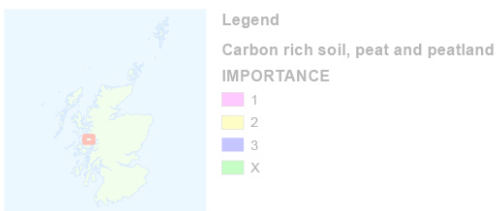
8.21 Peatland

8.22 Scotland's peatlands contribute to providing carbon storage which helps to counteract climate change. Also, they form landscapes for farming, tourism and crofting and scenic places to live. Tracts of Moidart are composed of carbon-rich soil, peat and peatland. They provide unique semi-natural habitats here. They have been mapped for *Scotland's National Peatland Plan* and below are overlaid with HIA results to assess peatland condition.

Carbon rich soil, peat and peatland



© Scottish Natural Heritage, © Scottish Office, © Scottish Executive, © General Register Office (Scotland), © Crown Copyright and database rights 2010 Ordnance Survey 100017908, © Scottish Rights of Way Society, © Forest Enterprise, © Forestry Commission. Some features of this map are based on digital spatial data licensed from the Centre for Ecology and Hydrology © NERC (CEH) Defra and Met Office © Crown Copyright © The James Hutton Institute Ordnance Survey © Crown Copyright. All rights reserved 10017908 2016



8.22 From monitoring, it can be seen that Moidart peatland is under light browsing pressure and not subject to erosion. Some areas of high-altitude peat hags are subject to weather erosion but generally appear stable i.e. neither expanding nor contracting.